



global-roam
ez2update Australia
Installation and Upgrade Manual
Document Version 1.15
9 August 2017

Table of Contents

Introduction and Prerequisites	3
ez2update Australia	3
What you will need to do.....	3
Supported Platforms and System Requirements.....	4
Operating Systems	4
Database	4
.NET Framework.....	4
File System Access.....	4
Hardware Requirements.....	4
Database Population.....	5
Network Requirements.....	6
Database Tables	7
Contacting Global-Roam	8
Installing ez2update for the First Time	9
Using Oracle to hold your ez2update Database	10
Using SQL Server to hold your ez2update Database	11
Installing ez2update Australia.....	12
Installation	12
Configuration	12
Done with ez2update Australia.....	22
Installing the Reaper	23
Note – Dataset Configuration	23
Note – Database Location.....	24
Note – Customized Reaping.....	24
Note – Oracle Reaping	25
Done Installing for the First Time.....	26
Upgrading an Existing Installation	27
Upgrading ez2update Australia	27
Upgrading the ez2update Australia Databases	27
Configuring Database Maintenance	29

Introduction and Prerequisites

ez2update Australia

ez2update Australia is part of a suite of software products we have developed to make Australia's electricity market understandable.

ez2update Australia provides a fast and reliable feed of Australian National Electricity Market (NEM) data from AEMO, ElectraNet, TransGrid, AusNet Services, and Powerlink.

ez2update Australia is server side software that pulls data over the internet from our servers, and writes this data into your own local database. The ez2update Australia database contains a set of tables for each data set that you license, installed into an SQL Server or Oracle instance.

ez2update Australia works in conjunction with global-roam's leading edge viewing platform, ez2view, which reads data from the ez2update Australia database, and displays the information in an intuitive dashboard format.

This manual describes how to install ez2update Australia as either an upgrade to a previous version, or as a clean installation.

This manual applies to ez2update Australia version 4.0.114 or later.

What you will need to do

The tasks involved in this deployment include such things as installation and configuration of a database and configuration of proxy settings.

To successfully install or upgrade ez2update Australia you will need:

- Intermediate IT skills.
- Basic knowledge of Microsoft SQL Server or Oracle.
- Your GR-ID and password.
- Access to a user account with administrative permissions.
- Knowledge of any proxy settings or other internet security processes in place in your organization.
- Access to the internet.

For each of the global-roam products that you install or upgrade, you will need to go through the following steps:

1. Installation of the software
2. Configuration of Proxy settings
3. Activation of your software license
4. Configuring a connection to the database
5. Install databases and tables

Supported Platforms and System Requirements

Operating Systems

ez2update Australia is officially supported on the following platforms:

- Windows Vista (32 bit and 64 bit)
- Windows 7 (32 bit and 64 bit)
- Windows Server 2008
- Windows Server 2010
- Windows Server 2016

ez2update Australia may work on other Windows platforms - please let us know how you get on...

Database

ez2update Australia requires either Microsoft SQL Server or Oracle. The following versions are supported:

- Microsoft SQL Server 2005
- Microsoft SQL Server 2008
- Microsoft SQL Server 2008 R2
- Microsoft SQL Server 2008 R2 Express
- Microsoft SQL Server 2012
- Microsoft SQL Server 2012 Express
- Oracle 10g (requires 32-bit Oracle Client, not included in install)
- Oracle 11g (requires 32-bit Oracle Client, not included in install)

.NET Framework

ez2update Australia requires the .NET Framework 4.5.2 Full Profile. If you do not have this installed, and you install using the .EXE file, it will install it for you. This may take some time.

If you use the .MSI file to install, you must have the .NET Framework 4.5.2 Full Profile installed beforehand, or the .MSI will fail to install and display an error message.

File System Access

ez2update Australia will create and write to a number of folders under the following locations:

ProgramData/global-roam

Hardware Requirements

ez2update requires the following hardware:

- *Processor:* Pentium III-compatible processor or faster; 2.0 GHz or faster.
- *Disk Space:* 620 MB free disk space. This assumes that the .NET prerequisites are already installed on the target machine. This does not include data stored in the database.
- *Memory:* 4 GB RAM or more (recommended 6 GB)

Database Population

During the setup of ez2update, the application will download some historical data (one time per installation only) and backfill the database. This initial database population will consume approximately 250 MB of network downloads from the global-roam servers, which will translate into approximately 8,500 MB of data in the database on disk.

After the initial setup, ez2update will download data at a rate of approximately 2 to 3 MB of network bandwidth per hour, which will translate into approximately 2.5 to 3 GB of data in the database per day.

To prevent uncontrolled growth in the size of the database, ez2update is accompanied by a Reaper script that should be deployed according to the instructions in the section [Installing the Reaper](#), on page 23.

Network Requirements

ez2update Australia downloads data from global-roam servers over the Internet. Additionally, ez2update requires access to internet for license verification and configuration purposes.

We recommend that you allow firewall access using our domain name rather than by IP address as we cannot guarantee that our IP addresses are static.

To simplify firewall configuration for future ez2update upgrades we recommend that you allow firewall access for the entire domain.

***.datastripe1.com**

ez2update can be accessed via HTTP or HTTPS. The specific URL's that ez2update will require access to are:

Accessing ez2update via HTTP:

URL	Description	Available Port
http://ez2updatelicensing.datastripe1.com	License verification	80
https://ez2updateconfig.datastripe1.com	Configuration service*	443*
http://ez2update.datastripe1.com	Data service	80
http://ez2update.datastripe2.com	Data service	80
http://ez2update.datastripe3.com	Data service	80

**The configuration service can only be accessed via HTTPS*

Accessing ez2update via HTTPS:

URL	Description	Available Port
http://ez2updatelicensing.datastripe1.com	License verification*	80*
https://ez2updateconfig.datastripe1.com	Configuration service	443
https://ez2update.global-roam.com	Data service	443
https://ez2update.datastripe2.com	Data service	443
https://ez2update.datastripe3.com	Data service	443

**The license verification service can only be accessed via HTTP*

With HTTPS access, you will need to ensure that you have permitted the use of the SSL certificate that we have configured for the URLs listed.

Database Tables

ez2update Australia will populate your database with data from a subset of the AEMO MMS Data Model. If you require documentation on the structure of the tables for your own analysis, please refer to the AEMO documentation for the MMS Data Model available from the AEMO website. The MMS tables that are populated by ez2update are as follows:

BIDDAYOFFER	INTERCONNECTOR	PARTICIPANTCLASS
BIDDAYOFFER_D	INTERCONNECTORCONSTRAINT	PREDISPATCHCASESOLUTION
BIDDUIDDETAILS	LOSSFACTORMODEL	REGION
BIDDUIDDETAILSTRK	LOSSMODEL	PREDISPATCHCONSTRAINT
BIDPEROFFER	MARKET_PRICE_THRESHOLDS	PREDISPATCHINTERCONNECTORRES
BIDPEROFFER_D	MARKETNOTICEDATA	PREDISPATCHLOAD
BIDTYPES	MCC_CONSTRAINTSOLUTION	PREDISPATCHPRICE
BIDTYPESTRK	MNSP_INTERCONNECTOR	PREDISPATCHPRICESENSITIVITIES
DISPATCH_UNIT_SCADA	MNSP_PARTICIPANT	PREDISPATCHREGIONSUM
DISPATCHABLEUNIT	MTPASA_CASESOLUTION	PREDISPATCHSCENARIODEMAND
DISPATCHCASESOLUTION	MTPASA_CONSTRAINTSOLUTION	REGIONSTANDINGDATA
DISPATCHCONSTRAINT	MTPASA_INTERCONNECTORSOLUTION	SPDCONNECTIONPOINTCONSTRAINT
DISPATCHINTERCONNECTORRES	MTPASA_REGIONAVAIL_TRK	SPDINTERCONNECTORCONSTRAINT
DISPATCHLOAD	MTPASA_REGIONAVAILABILITY	SPDREGIONCONSTRAINT
DISPATCHOFFERTRK	MTPASA_REGIONSOLUTION	STADUALLOC
DISPATCHPRICE	NETWORK_EQUIPMENTDETAIL	STATION
DISPATCHREGIONSUM	NETWORK_OUTAGECONSTRAINTSET	STATIONOPERATINGSTATUS
DUDETAIL	NETWORK_OUTAGEDetail	STATIONOWNER
DUDETAILSUMMARY	NETWORK_OUTAGESTATUSCODE	STATIONOWNERTRK
EMSMASTER	NETWORK_SUBSTATIONDETAIL	STPASA_CASESOLUTION
GENCONDATA	P5MIN_CASESOLUTION	STPASA_CONSTRAINTSOLUTION
GENCONSET	P5MIN_CONSTRAINTSOLUTION	STPASA_INTERCONNECTORSOLN
GENCONSETINVOKE	P5MIN_INTERCONNECTORSOLN	STPASA_REGIONSOLUTION
GENCONSETTRK	P5MIN_REGIONSOLUTION	TRADINGINTERCONNECT
GENERICCONSTRAINTRHS	P5MIN_UNITSOLUTION	TRADINGLOAD
GENERICQUATIONDESC	PARTICIPANT	TRADINGPRICE
GENERICQUATIONRHS	PARTICIPANTCATEGORY	TRADINGREGIONSUM
GENUNITS	PARTICIPANTCATEGORYALLOC	TRANSMISSIONLOSSFACTOR

Contacting Global-Roam

If you experience difficulties in installing or upgrading ez2update Australia, please feel free to contact us at:

e-mail: support@global-roam.com

phone: +61 7 3368 4064

Installing ez2update for the First Time

Question: Will you be using Oracle or SQL Server for your database backend?

If the answer is “Oracle”, go to the section [Using Oracle to hold your ez2update Database](#), on page 10.

If the answer is “SQL Server”, go to the section [Using SQL Server to hold your ez2update Database](#), on page 11.

Using Oracle to hold your ez2update Database

You're here because you already have an Oracle instance to use, probably managed by an Oracle DBA. Now would be a good time to talk to them, assuming you haven't already.

ez2update Australia requires system components on the host machine to allow it to connect to an Oracle database. Your Oracle DBA can help you with installing the necessary system components in order to allow connections to Oracle from the host machine.

One way to enable Oracle connectivity is to extract the Oracle Instant Client into the install directory for ez2update Australia. Your DBA may have other suggestions.

Make a note of the details to connect to your Oracle instance (machine, instance name and username/password to use).

Proceed to [Installing ez2update Australia](#), on page 12.

Using SQL Server to hold your ez2update Database

Question: Do you already have an existing instance of SQL Server that you can use for the ez2update Australia Databases?

If “Yes”, you can skip this section! Make a note of the SQL Server instance location (MACHINENAME\INSTANCENAME) and a Username and Password combination that you will be using. Go to the next section [Installing ez2update Australia](#), on page 12.

If “No”, keep reading.

We recommend that you install **SQL Server 2008 R2 Express**, which is a free database server provided by Microsoft.

Download SQL Server 2008 R2 Express from [Microsoft Download Center](#).

- Make sure you install the version appropriate for your operating system (x86 for 32 bit operating systems, x64 for 64 bit operating systems).
- Also, make sure that you download both the database and the management tools.

Run the installer for SQL Server Express. You may be prompted to install .NET Framework v3.5 as a prerequisite. There may also be some other pre-requisites, just follow the on-screen instructions.

- These instructions assume you use the default name for the database instance which is “SQLEXPRESS”.
- During the install of SQL Server Express, you will be prompted an authentication mode. We recommend that you select "SQL Authentication Mode". You will also be prompted to create an account for connecting to the database. We recommend that you create an account specifically for ez2update Australia to access the database. This account must have read/write access to the database.

Run the installer for the SQL Server Management Tools.

Having run the installers, run the "SQL Server Configuration Manager" to check that the install worked. You can find the SQL Server Configuration Manager through the Windows Start menu under [Programs - Microsoft SQL Server 2008 R2 - Configuration Tools].

- Use the SQL Server Configuration Manager to make the SQL Server instance accessible over your network. To do this, select [SQL Server Network Configuration -> Protocols for SQLEXPRESS] from the panel on the left hand side of the screen, and enable at least TCP/IP.
- NOTE: To access your SQL Server instance over the network you may also need to open up TCP ports appropriately in your firewall to the host machine. The default SQL Server port is 1433.

You can now continue on the next section - [Installing ez2update Australia](#).

Installing ez2update Australia

Make sure you have the details for connecting to whatever database backend you will be using (Oracle or SQL Server).

ez2update Australia should be installed on a stable machine, one with high availability (on all the time, does not regularly get restarted). Desktops and laptops are not usually appropriate for ez2update Australia (there's nothing stopping you from installing the ez2update Australia on them, but do it at your own peril).

Installation

Download the install file for ez2update Australia from the download section of the ez2view Australia web site (go to <http://install.ez2viewaustralia.info> and follow the links to the ez2update Download page).

Right-click the install file and choose the "Run As Administrator" option, then follow the prompts until the installation has completed.

If you do not already have the .NET Framework 4.5.2 Full Profile installed, and you are installing using the .EXE , the installer will install it. This may take some time. If you are using the .MSI then you will need to make sure you have the .NET Framework 4.5.2 Full Profile installed beforehand.

Once the installation has completed, you should be able to see an icon for ez2update Australia on your desktop. Additionally, there will be Windows Service installed called "ez2update Australia".

The Windows Service will be installed with default login details. Following the install, confirm that these logon details are set to a user who has access to the internet and to the Oracle/SQL Server instance that you have chosen (ez2update Australia requires access to the internet and to its database at all times).

Configuration

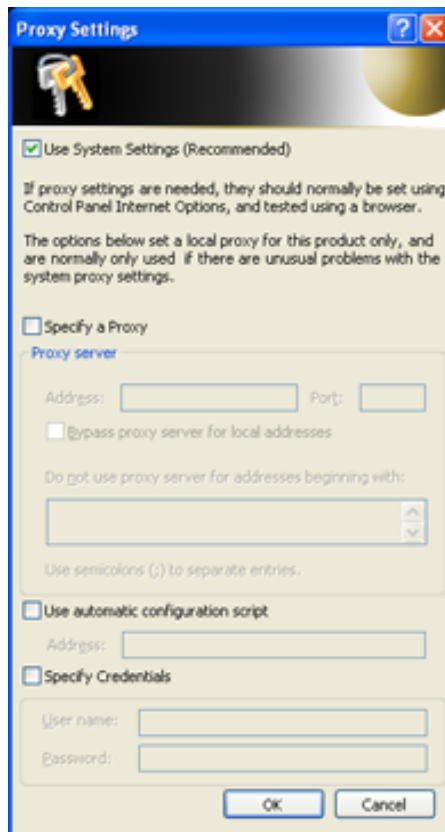
Double-click on the ez2update Australia Service shortcut on the desktop. A mostly gray screen with a simple menu in the top left corner. Make the following menu selection:

File -> Application -> Start

Proxy Setup

ez2update Australia requires access to internet to retrieve data from the Global-Roam servers. For more details on the specific URLs go to the section on [Network Requirements](#).

If ez2update Australia has experienced a problem with connecting to any of the websites above during startup, it will display the Proxy Settings screen. It looks like this:



If you do not use a proxy to access the internet, simply click OK.

If you do use a proxy, then we suggest that you maintain your proxy information in your system settings. If you make sure the [Use System Settings] option is checked on the Proxy Settings screen, then your system settings should automatically be detected and used in ez2update Australia.

If you have difficulties with ez2update Australia with regards to internet access, you may need to manually specify your proxy settings and credentials. This can be done on the Proxy Settings screen.

NOTE: The Proxy Settings screen is also available from inside the application at [**Tools -> Internet Settings**]. This option is only available when ez2update Australia is running as an Application, this option will not be available if ez2update Australia is running as a Service.

NOTE: The ez2update Australia service is installed by default under the Local Service account. If your proxy requires authentication, then this account will not work. To resolve this, run the ez2update Australia Service under a domain account that does have the ability to authenticate to the proxy.

License Activation

On first startup, ez2update Australia will display a screen saying that “This machine does not have a license for ez2update Australia”.

Simply follow the instructions on the screen to configure a license for ez2update Australia (it mostly involves entering information/selecting options and clicking next).

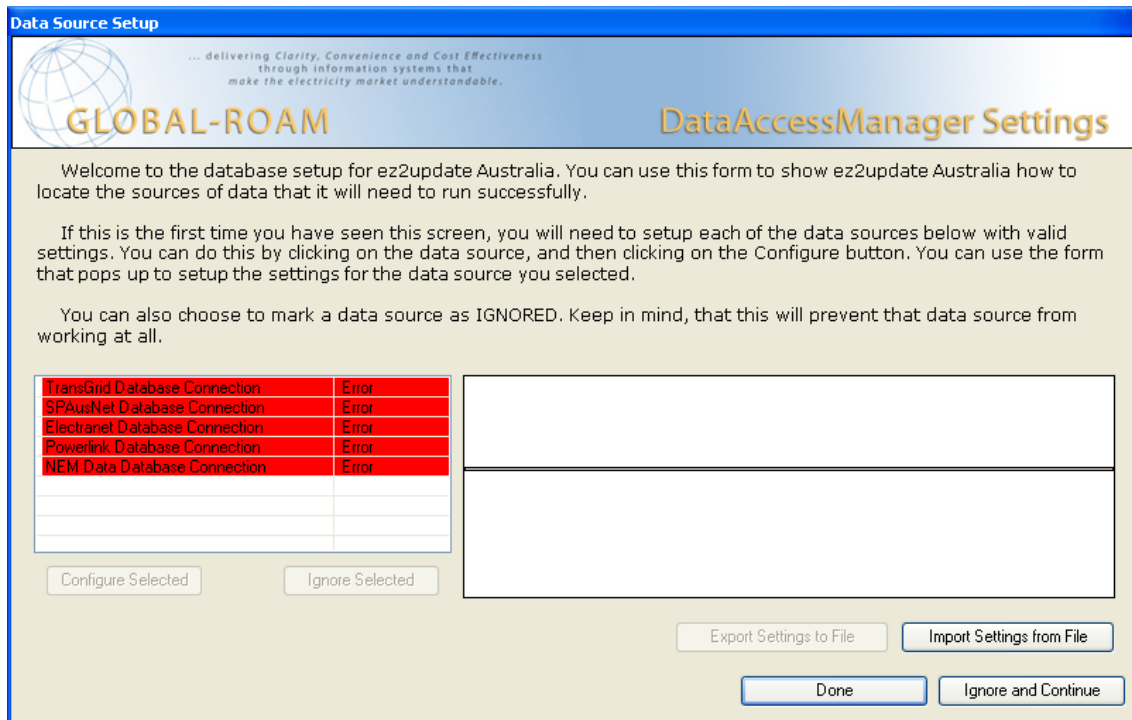
If you do not have any licenses to select on Step 3, and you believe that you should have a full commercial license, then you will need to go to <http://www.global-roam.com/secure> to manage

your licenses before you can go any further. After you login to the website, click on My Licenses (top-right corner). On this page you can manage your licenses. If you didn't have a license available in Step 3, you may need to deactivate one of your existing licenses to free it up for use.

You cannot start ez2update Australia without a valid license.

Database Setup

On first startup, ez2update Australia will display a screen called "Data Source Setup". This screen is the database settings screen. It will allow you to point ez2update Australia at the database that it needs to update. On first startup, it will look something like this:



There are 5 possible database connections. You may only have a subset of the total list of database connections available in your copy of ez2update Australia.

The 5 possible database connections are:

- TransGrid Database Connection
- SPAusNet Database Connection
- Electranet Database Connection
- Powerlink Database Connection
- NEM Data Database Connection

For each of the database connections that you have, please use the section [Configuring a Database Connection](#), on page 15.

Configuring a Database Connection

A database connection is the location where ez2update Australia stores all of the data for a data set that it downloads. To configure a Database Connection, from the database settings screen

- Select the Database Connection you want to configure
- Click the Configure Selected button.

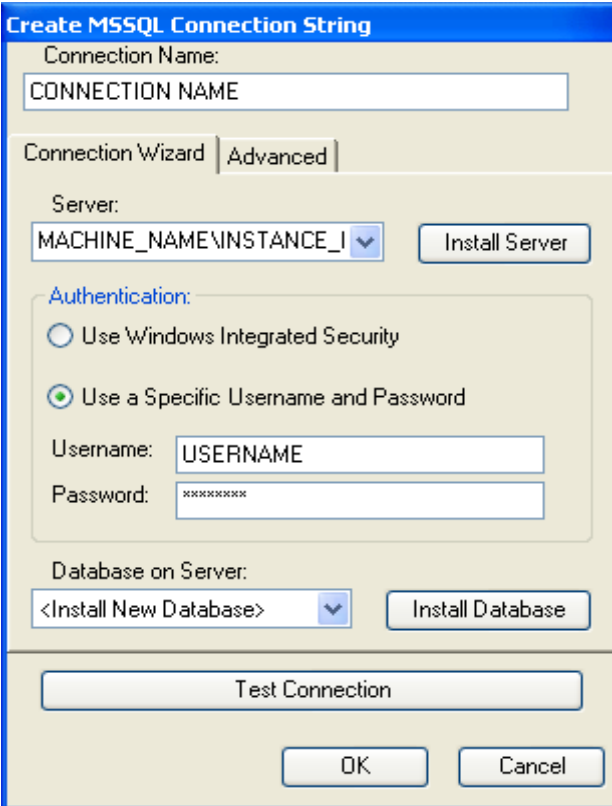
On the next screen, select either [DATASET]_MSSQL, or [DATASET]_ORACLE (where DATASET is the name of the data set you are configuring, i.e. NEMData, SPAusNet or any one of the others) in the drop-down box at the top, and click the New button.

If you are using SQL Server, go to the section [SQL Server Specific](#), on page 16.

If you are using Oracle, go to the section [Oracle Specific](#), on page 20.

SQL Server Specific

Fill the next screen in with information about how to connect to the database where you want to install the tables for the data set.



The screenshot shows the 'Create MSSQL Connection String' dialog box, specifically the 'Advanced' tab. The 'Connection Name' field contains 'CONNECTION NAME'. The 'Server' dropdown menu is set to 'MACHINE_NAME\INSTANCE_I', with an 'Install Server' button next to it. Under the 'Authentication' section, the 'Use a Specific Username and Password' radio button is selected. The 'Username' field contains 'USERNAME' and the 'Password' field contains 'XXXXXXXX'. The 'Database on Server' dropdown menu is set to '<Install New Database>', with an 'Install Database' button next to it. A 'Test Connection' button is located at the bottom of the dialog. At the very bottom are 'OK' and 'Cancel' buttons.

Note:

If you cannot find your SQL Server in the server drop down box, you can simply type in the name of the machine that it is on, followed by a “\” character, followed by the instance name. e.g. MACHINE_NAME\INSTANCE_NAME.

Once you have filled out the name, server and authentication, it’s time to install the tables necessary for the data set you are configuring.

We suggest that you install all tables (for all data sets) into a single SQL Server database. If this is the first time you are running through the Configuring a Database Connection section, then you should go to the section [Creating a new SQL Server Database](#), on page 17. If you have previously created an SQL Server database to use for all your ez2update data set tables, go to the section [Installing the tables into an existing SQL Server Database](#), on page 18.

Creating a new SQL Server Database

Use the "Database on Server" drop down box to select the "<Install New Database>" option and then click on the "Install Database" button.

Enter the name for the database where you want to tables for the data set installed. If the default name is fine, simply click OK. If you enter something different write it down for later.

After the script has finished executing, you will be returned to the Create MSSQL Connection String screen. Click on the "Test Connection" button to verify that all is well, then click OK.

Go to the section [Done with Database Connection Configuration](#), on page 19.

Installing the tables into an existing SQL Server Database

Use the "Database on Server" drop down box to select the name of the database that you previously created for the purpose of holding tables for the ez2update Australia data sets.

After the script has finished executing, you will be returned to the Create MSSQL Connection String screen. Click on the "Test Connection" button to verify that all is well, then click OK.

Go to the section [Done with Database Connection Configuration](#), on page 19.

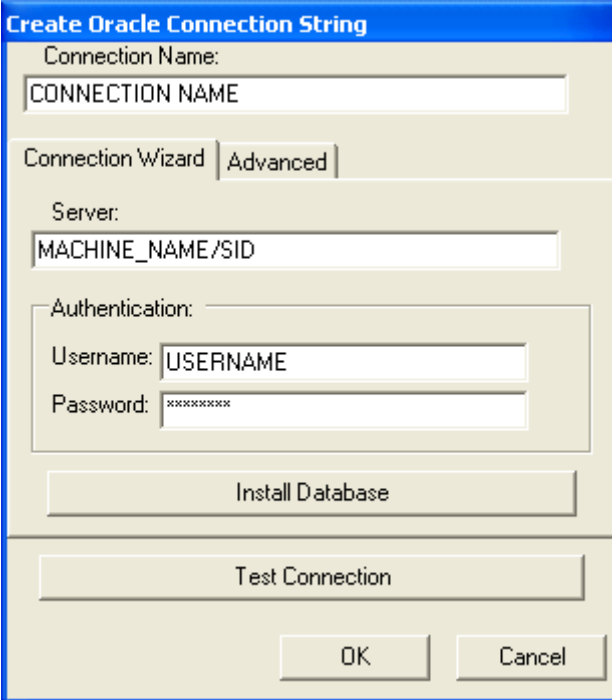
Done with Database Connection Configuration

If you need to configure another database connection, go back to [Configuring a Database Connection](#), on page 15.

If you are done, go to [Done with Database Setup](#), on page 21.

Oracle Specific

Fill the next screen in with information about how to connect to the Oracle database where you want to install the tables for the data set.



The screenshot shows a dialog box titled "Create Oracle Connection String". It has a "Connection Wizard" tab with "Advanced" selected. The fields are: "Connection Name" (text box with "CONNECTION NAME"), "Server" (text box with "MACHINE_NAME/SID"), "Authentication" (group box containing "Username" (text box with "USERNAME") and "Password" (text box with "*****")), "Install Database" (button), "Test Connection" (button), "OK" (button), and "Cancel" (button).

Once you have filled out the name, server and authentication, click on the “Test Connection” button. It will ask you if you want to install the database tables. Select “Yes” (you can also click on the “Install Database” button and the same thing will happen).

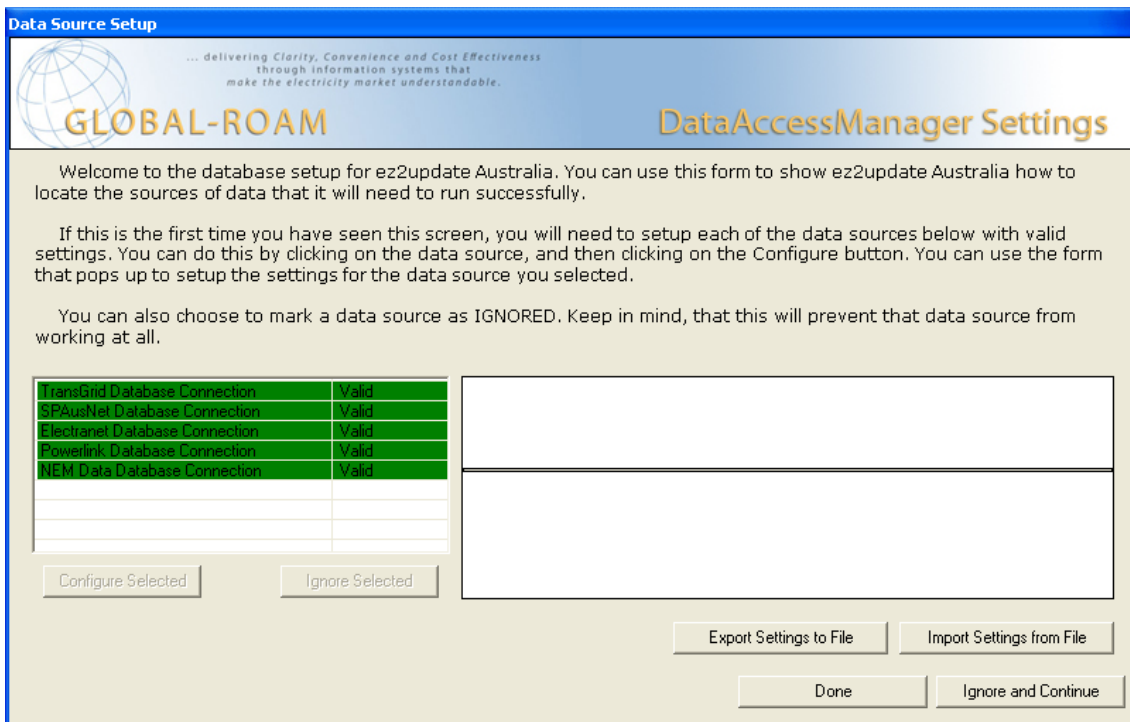
Once the script has finished executing, click “Test Connection” to verify that all is well, then click OK.

If you need to configure another database connection, go back to [Configuring a Database Connection](#), on page 15.

If you are done, go to [Done with Database Setup](#), on page 21.

Done with Database Setup

You should be back at the main database settings screen. It should now look something like this (remember that you may not have all the connections shown here):



Data Source Setup

... delivering Clarity, Convenience and Cost Effectiveness through information systems that make the electricity market understandable.

GLOBAL-ROAM

DataAccessManager Settings

Welcome to the database setup for ez2update Australia. You can use this form to show ez2update Australia how to locate the sources of data that it will need to run successfully.

If this is the first time you have seen this screen, you will need to setup each of the data sources below with valid settings. You can do this by clicking on the data source, and then clicking on the Configure button. You can use the form that pops up to setup the settings for the data source you selected.

You can also choose to mark a data source as IGNORED. Keep in mind, that this will prevent that data source from working at all.

TransGrid Database Connection	Valid
SPAusNet Database Connection	Valid
Electranet Database Connection	Valid
Powerlink Database Connection	Valid
NEM Data Database Connection	Valid

Note that all the Database Connections say “Valid” next to them (this means it’s all set up and ready to go).

Click Done.

Note:

If you need to change your database settings after setting them up initially, you can access the Data Access Manager using the top-level menu. Before modifying the connection string you should stop ez2update (either Application or Service) using the **File** menu option.

Tools -> Database Connection Strings

For the new settings to take effect, ez2update will request t restart.

Done with Configuration

At this point, your copy of ez2update is all configured and ready to go. In fact, after you dismissed the last configuration dialog, it should have already started doing things.

Done with ez2update Australia

At this point your updater should be showing a list of file types, and the last times that a file of that type was downloaded and processed.

Please leave ez2update Australia to run until it has finished populating the database for the first time. This may take an hour or so, depending on the speed of your machine.

Once the population has run for about an hour, you can safely go to **File -> Application -> Stop**, and then go to **File -> Service -> Start** in order to set ez2update Australia to run completely autonomously. You can safely close the Updater Interface at this point, and it will continue to work in the background as a Windows Service.

If you cannot see at least some activity, or if you do not have any files appearing at all, or you see red errors, something is wrong, and ez2update Australia is probably not working. If this is the case, please contact global-roam.

Go to the section [Installing the Reaper](#), on page 23.

Installing the Reaper

The reaper is a small SQL Script set to run automatically at regular intervals, to keep the size of the ez2update Australia database relatively small. This section provides instructions for setting up a Windows Scheduled task to run this Reaper Script at regular intervals. You will need to download the script and place it in a well known folder that is accessible to the Scheduled Task.

Download the Reaper Script for ez2update Australia from the download section of the ez2view Australia web site (go to <http://install.ez2viewaustralia.info/> and follow the links to the Download page).

Set up a new Windows Scheduled Task – if you need to, please consult the Windows Help system to find out how to establish a Scheduled Task on your operating system.

The Scheduled Task should be set up to run a command line as follows:

```
sqlcmd.exe -S [SERVER_NAME] -U [USERNAME] -P [PASSWORD] -i [PATH TO SCRIPT]
```

where the following are the arguments:

- SERVER_NAME is the fully qualified address of the SQL Server that the ez2update Database is installed on (MACHINENAME\INSTANCENAME)
- USERNAME is a user account in the specified SQL Server with delete permissions on the ez2update Database
- PASSWORD is the SQL Server password for the above USERNAME
- PATH_TO_SCRIPT is the full path to the Reaper script file that you downloaded above

Note that sqlcmd.exe is typically located in

```
C:\Program Files\Microsoft SQL Server\[VERSION]\Tools\Bin.
```

Pick the latest version if there are multiple.

Schedule this task to occur every day (once every 24 hours) at midnight.

Note – Dataset Configuration

If you do not have access to all of the datasets available through ez2update Australia, then you will need to edit the maintenance script to remove the sections that deal with the datasets that you do not have.

Inside the script, each section that deals with a dataset is labeled as follows.

```
BEGIN [DATASET] Table Maintenance
```

```
[Script for deleting table data]
```

```
END [DATASET] Table Maintenance
```

Note – Database Location

The ez2update Australia reaper script supports a different database location for each of the data sets that the application updates (NEMData, Electranet, Powerlink, SPAusNet and Transgrid).

It is possible that the databases that contain the tables required for the data sets above are not named the same as the default names (the default names are listed above). If this is the case, then you need to find the appropriate entry in the script, and change it to your database name.

The entry will look like this:

```
USE DATABASE_NAME  
GO
```

For example, if you have installed the tables required for the Electranet data set (the Electranet_Data table) into a database called 'ez2update Australia' then you will need to change the line:

```
USE ELECTRANET
```

to

```
USE [EZ2UPDATE AUSTRALIA]
```

It is important to include the square brackets if there is a space in your database name, otherwise they are optional.

It is possible to install the set of tables required for each of these data sets to the same database. If this is the case, then you will need to remove the redundant

```
USE DATABASE_NAME
```

entries throughout the script.

Make sure that the first

```
USE DATABASE_NAME
```

entry at the top of the script still exists however, and that it points to the correct database name (the one with all your tables in it).

Note – Customized Reaping

You can customize the amount of data that the script will delete by changing the values of various variables in the script. By default, the script will:

Variable	Default Hours	Tables
@HOURS_OF_PREDISPATCH_TO_KEEP	48	PREDISPATCHCASESOLUTION PREDISPATCHCONSTRAINT PREDISPATCHLOAD PREDISPATCHPRICE PREDISPATCHPRICESENSITIVITIES PREDISPATCHREGIONSUM

Variable	Default Hours	Tables
		PREDISPATCHINTERCONNECTORRES
@HOURS_OF_P5MIN_TO_KEEP	48	P5MIN_CASESOLUTION P5MIN_CONSTRAINTSOLUTION P5MIN_REGIONSOLUTION P5MIN_INTERCONNECTORSOLN P5MIN_UNITSOLUTION
@HOURS_OF_DISPATCH_TO_KEEP	48	DISPATCHCASESOLUTION DISPATCHCONSTRAINT DISPATCH_UNIT_SCADA DISPATCHCONSTRAINT DISPATCHINTERCONNNECTORRES DISPATCHLOAD DISPATCHPRICE DISPATCHREGIONSUM ELECTRANET_DATA POWERLINK_DATA SPAUSNET_DATA TRANSGRID_DATA
@HOURS_OF_TRADING_TO_KEEP	168	TRADINGLOAD TRADINGPRICE TRADINGINTERCONNECT TRADINGREGIONSUM TRADINGINTERCONNECT
@HOURS_OF_MARKETNOTICEDATA_TO_KEEP	168	MARKETNOTICEDATA
@HOURS_OF_STPASA_TO_KEEP	168	STPASA_CASESOLUTION STPASA_CONSTRAINTSOLUTION STPASA_INTERCONNECTORSOLN STPASA_REGIONSOLUTION
@HOURS_OF_MTPASA_TO_KEEP	672	MTPASA_CASESOLUTION MTPASA_CONSTRAINTSOLUTION MTPASA_INTERCONNECTORSOLUTION MTPASA_REGIONAVAILABILITY MTPASA_REGIONAVAIL_TRK MTPASA_REGIONSOLUTION
HOURS_OF_BIDDATA_TO_KEEP	48	BIDDAYOFFER BIDDAYOFFER_D BIDPEROFFER BIDPEROFFER_D DISPATCHOFFERTRK

Note - Oracle Reaping

We do not currently provide a reaper script for Oracle. Feel free to use this SQL Server script as a base, and work from there (or create your own script from scratch). It is probably a good idea to set up some sort of reaping however, as the data tables can get quite large over time.

If you do create a script for use in an Oracle environment, please let us know; we'd love to see it.

Done Installing for the First Time

If you got to this point, then everything probably went well, and you're all set up. Awesome!

If you have any problems at all, please contact global-roam.

Upgrading an Existing Installation

This section describes the steps for upgrading an existing installation of ez2update Australia.

Upgrading from an earlier version of ez2update Australia to the latest version is mostly painless. Please follow the instructions below.

Upgrading ez2update Australia

Installation

Download the install file for ez2update Australia from the download section of the ez2view Australia web site (go to <http://install.ez2viewaustralia.info/> and follow the links to the Download page).

Right-click the install file and choose the “Run As Administrator” option, then follow the prompts until the installation has completed.

If you do not already have the .NET Framework 4.5.2 installed, the installer will install it. This may take some time.

Once the installation has completed, you should be able to see an icon for ez2update Australia on your desktop. Additionally, there will be Windows Service installed called “ez2update Australia”.

The Windows Service will be installed with default login details. Following the install, confirm that these logon details are set to a user who has access to the internet and to the Oracle/SQL Server instance that you have chosen (ez2update Australia requires access to the internet and to its database at all times).

Upgrading the ez2update Australia Databases

After you have upgraded the ez2update Australia application, you may need to upgrade the ez2update Australia database to include new tables.

To do this you will need to run in application mode at which point ez2update Australia will detect if your current database is an older version than it expects and will prompt you to upgrade the database. If you elect not to upgrade the database at this point, you will be presented with the database configuration dialog from which you can select a different database or cancel to exit the application.

Configuration

Because you upgraded from a previous version of ez2update Australia, no additional configuration should be necessary.

Use the shortcut on the desktop (or in the Start Menu) to open ez2update Australia, and click **File -> Application -> Start**.

Done with Upgrading ez2update Australia

At this point your updater should be showing a list of file types, and the last times that a file of that type was downloaded and processed.

After a few minutes, you can safely go to **File -> Application -> Stop**, and then go to **File -> Service -> Start** in order to set ez2update Australia to run completely autonomously. You can safely close the Updater Interface at this point, and it will continue to work in the background as a Windows Service.

If you cannot see at least some activity, or if you do not have any files appearing at all, or you see red errors, something is wrong, and ez2update Australia is probably not working. If this is the case, please contact global-roam.

Go to the section [Configuring Database Maintenance](#), on page 29.

Configuring Database Maintenance

Global-roam provides a small SQL Script which can be set to run automatically at regular intervals, to keep the size of the ez2update Australia Database relatively small. This script is commonly known as “The Reaper”. It is only available for MSSQL Server installations (for a note about Oracle, see the end of this section).

Question: Have you previously installed the Reaper to maintain the size of your ez2update Database?

If you don't know whether or not you have previously installed the Reaper, check the Windows Scheduled Tasks on the computer where ez2update Australia is installed, and look for a task that uses sqlcmd to run a local sql script on the ez2update Australia database server.

If you answered yes, then go to the section [Upgrading the Reaper](#), on page 30.

If you answered no, then go to the section [Installing the Reaper](#) on page 23.

Upgrading the Reaper

It is possible that you have an older version of the Reaper. Go to the location where you placed the Reaper script during installation, open the “ez2Update Australia Database Maintenance vxx.sql” file, and check the top for the script version. Note down this version number.

Download the Reaper Script for ez2update Australia from the download section of the ez2update Australia web site (go to <http://install.ez2viewaustralia.info/> and follow the links to the Download page).

Compare the two version numbers. If the script you downloaded has a higher version number than your local copy, then replace your local copy with the one that you downloaded.

That’s it, you’re upgraded to the latest version of the Reaper script.

Note – Script Customizations

If you have previously customized your reaper script in any way, be careful simply overwriting the old script with the newer one. We recommend making a copy of the old script file before overwriting it, and then double checking for any customizations. Please read the notes under the next section to see which customizations may have taken place.