

deSide Companion

User Guide

The deSide Companion is an installed software application that will generate alerts based on data in a deSide database. The Companion supports alerts using screen pops, sounds, and e-mail.

Licensing

The deSide Companion is supplied as part of your deSide licence and so is covered by your deSide licence terms.

Download

You can download the deSide Companion from the deSide portal which is here:

<http://install.deside.info/download/deside-companion/>

Install

The download file is a standard installer which you should run on the target machine.

Activate and Configure

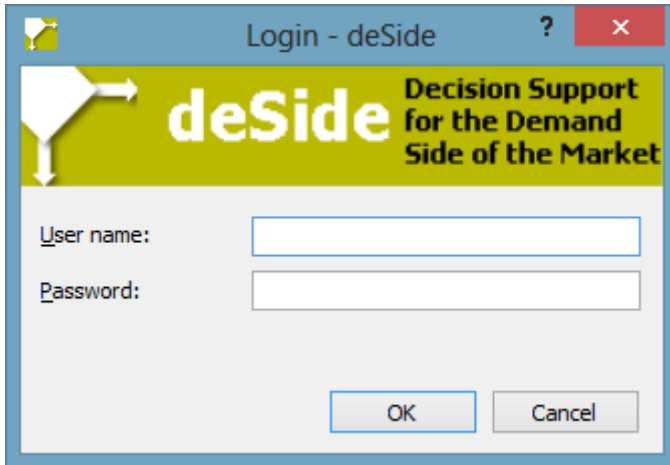
When the install is complete you can run the software. You will be prompted to activate a licence. To do this, use the credentials for the GR-ID that you have already used for deSide.

You will also be prompted for a database connection. Use the database that your deSide Updater writes to.

Log In

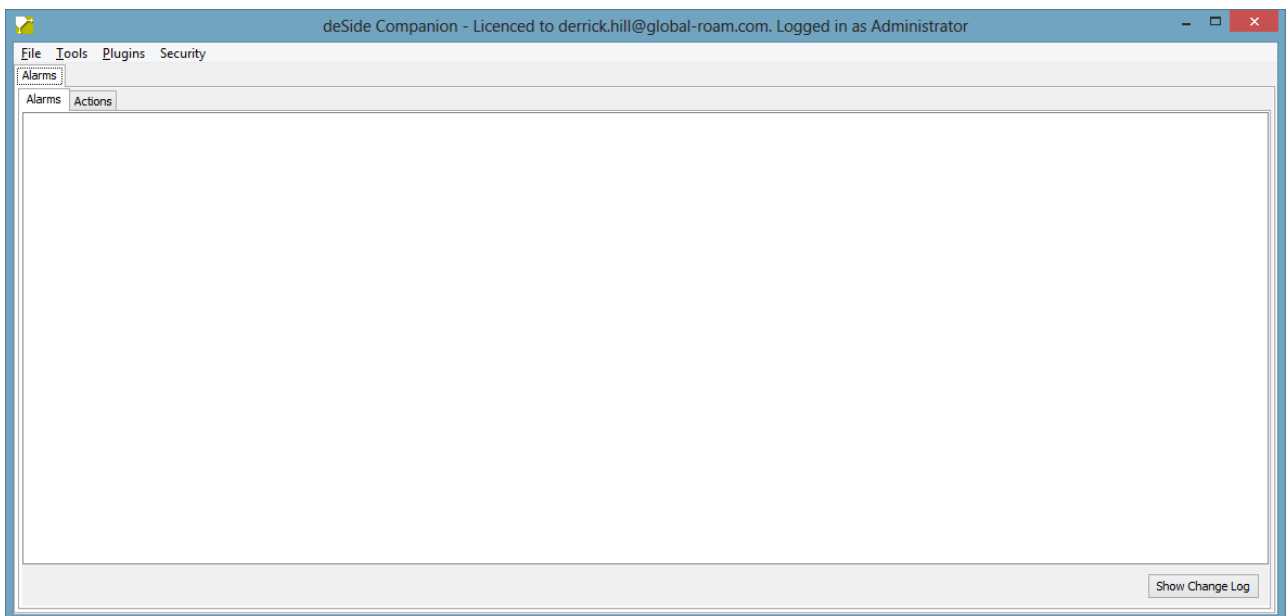
Once the software has been activated and configured you will see this screen:





The initial username is “administrator” and the password can be left empty.

Click OK and you will see this screen:



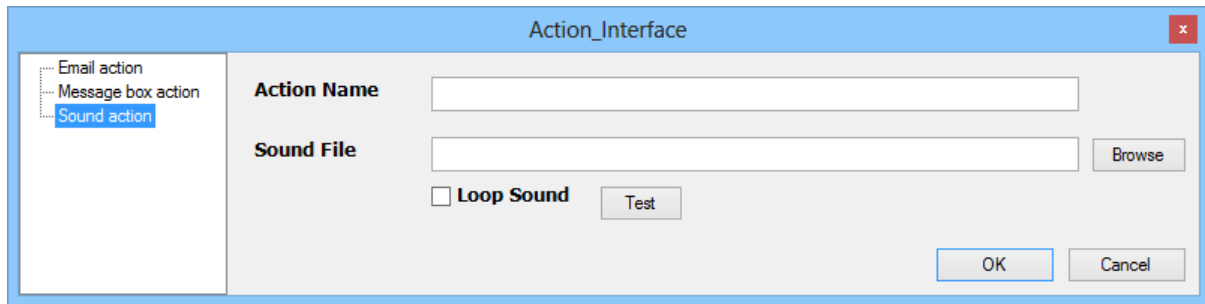
As a general rule the deSide Companion uses right-click context menus, so if you are exploring the application it is a good idea to right-click on various parts of the screen.

Create Actions

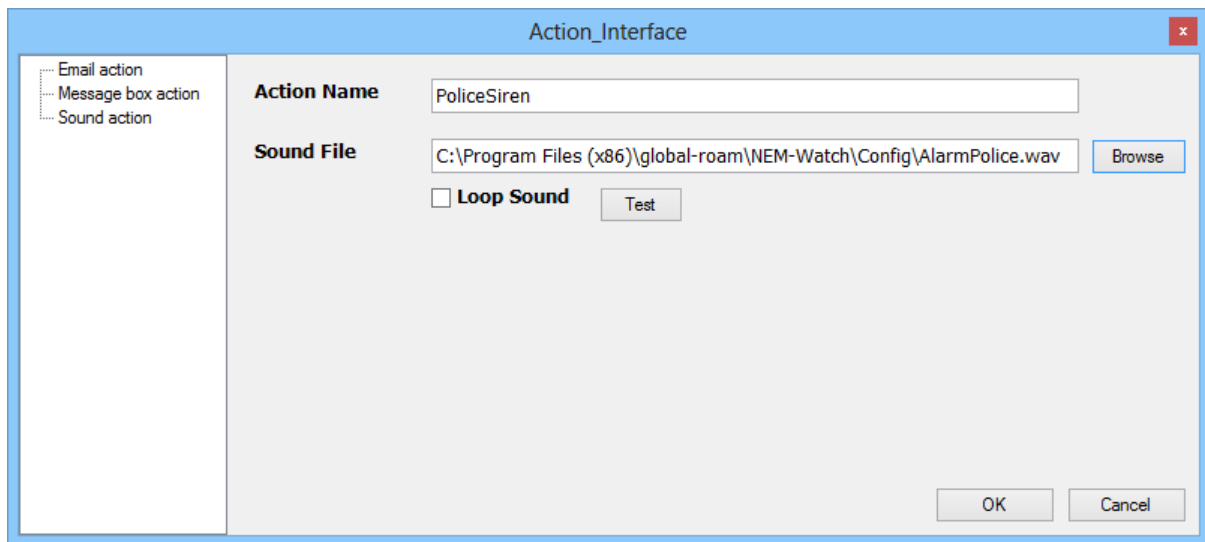
You can configure different “actions” that the Companion will use when alert rules trigger. We will first see how to set up an action, and then configure an alerting rule.



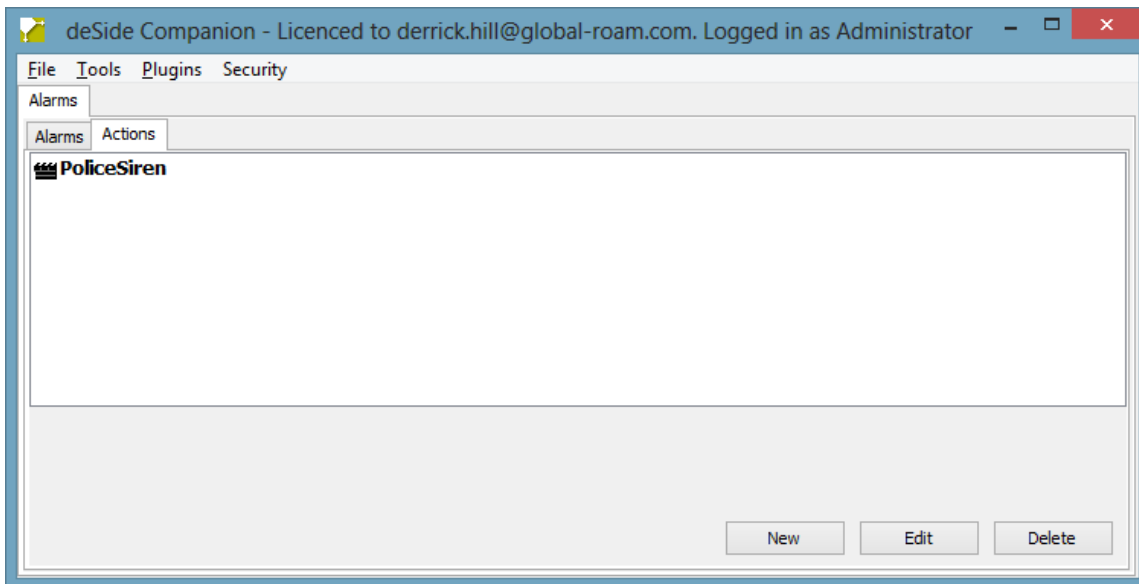
Click the “Actions” tab, and then right-click in the panel, and then select Add Action to see this screen:



Give the action a Name and select a WAV file from your file system. In the screen below we have selected a WAV file that is shipped with NEM-Watch (a NEM dashboard, also produced by Global-Roam), but you can record your own, or download WAV files from the internet.



Click OK, and you go back to the main screen.



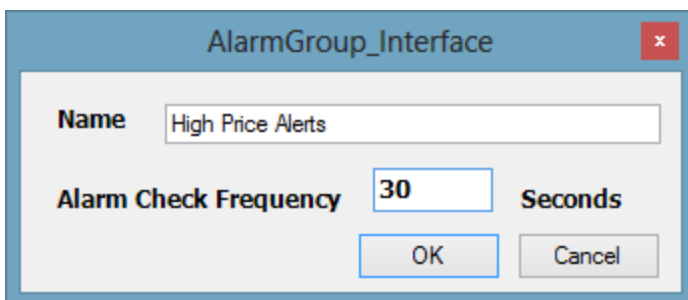
You can create a number of different Actions for use in different circumstances, but for the moment we have only created one.

Create Alerts

Now we will create an Alarm and an Alert based on the dispatch price in Queensland.

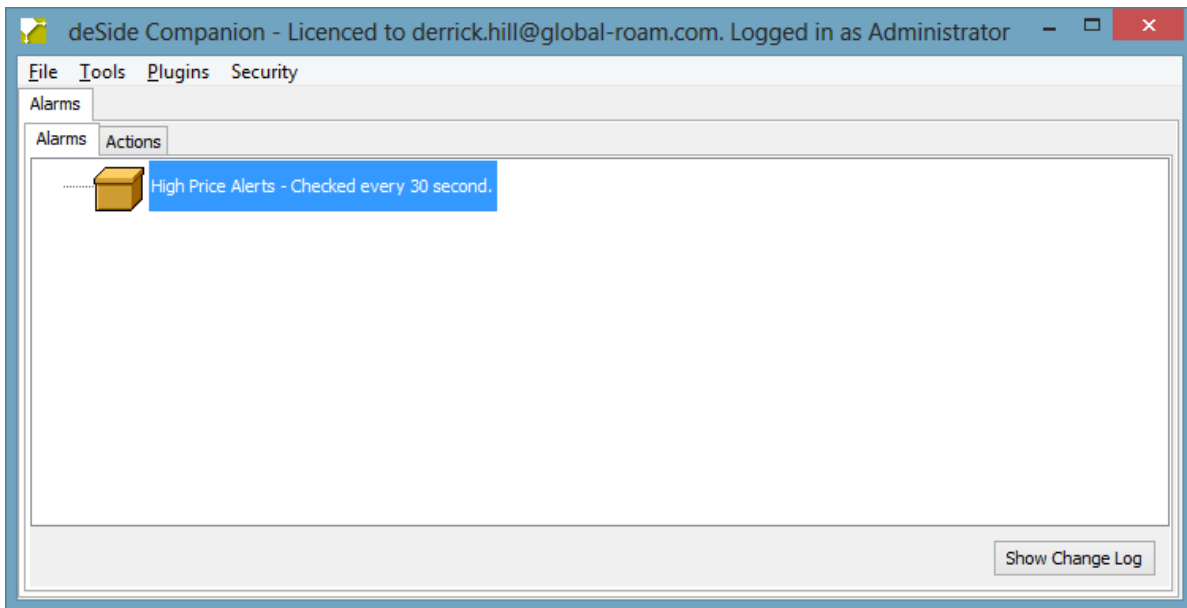
Select the Alarms tab, right click in the panel, and select “Create Alarm Group”.

You will see this screen (the Name and Check Frequency have been entered).

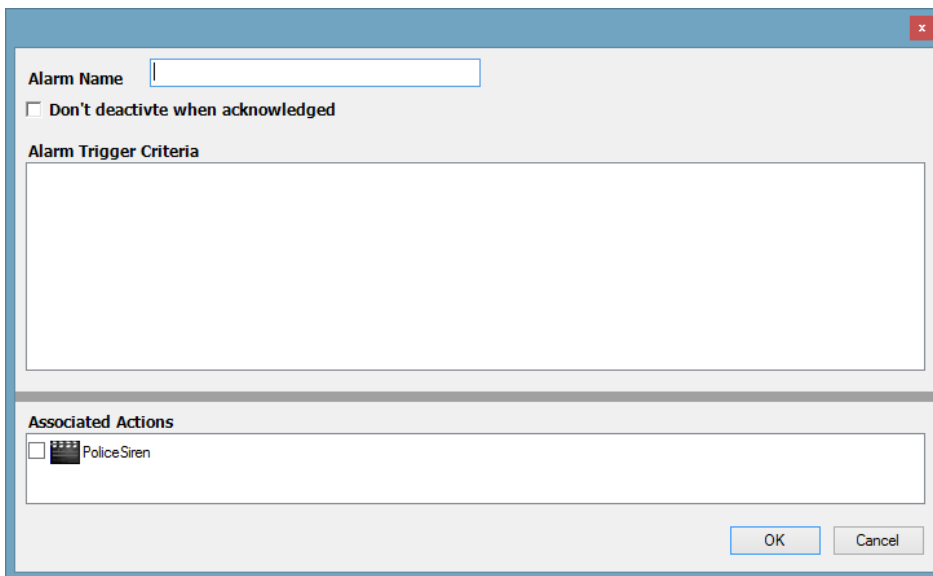


Click OK, and you will see this:



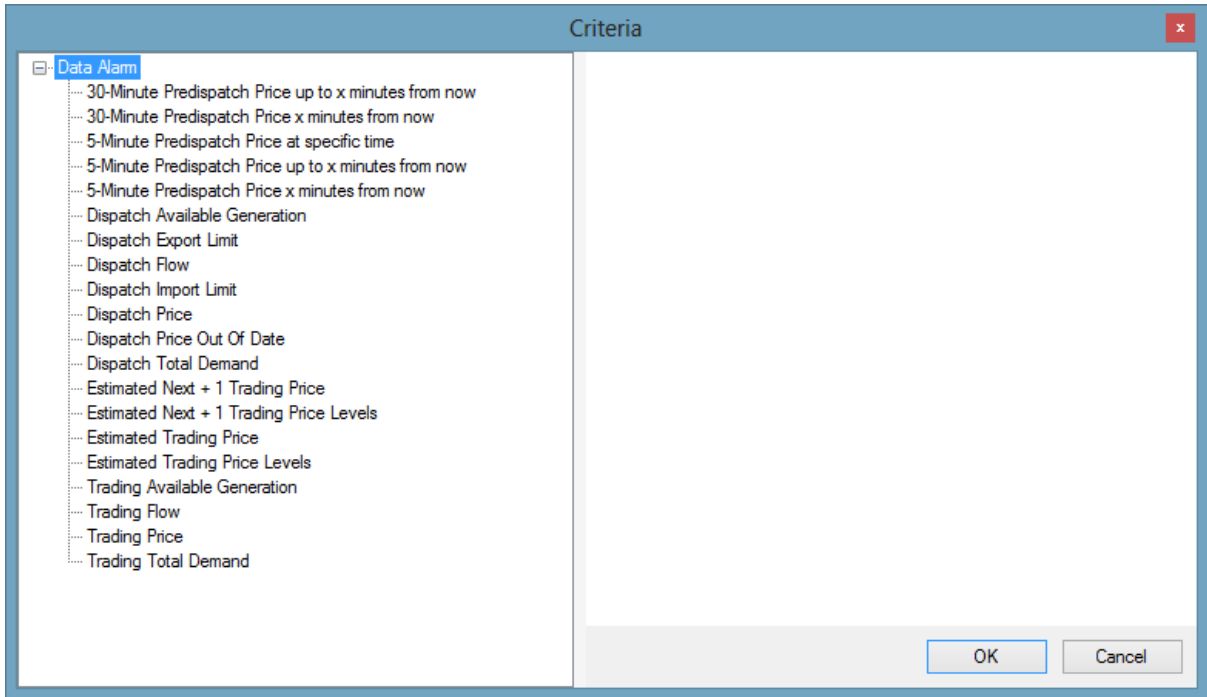


Right click on the icon for “High Price Alerts” and select “Add Alarm”. You will see a screen that looks like this:

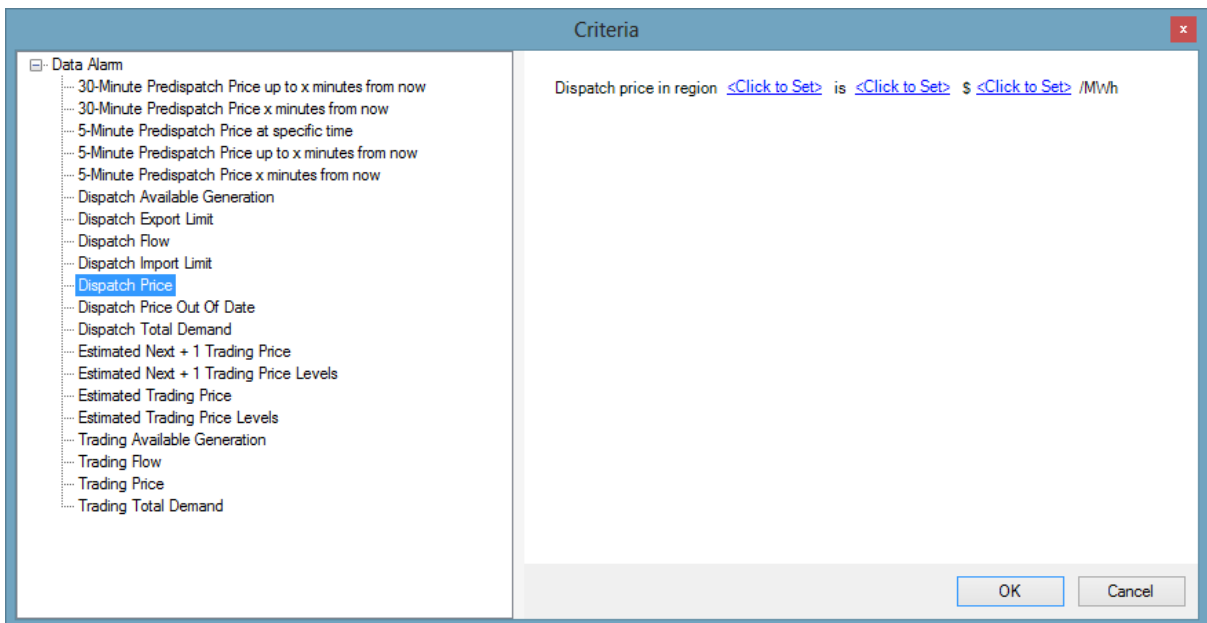


Right-click in the panel under the heading “Alarm Trigger Criteria” and you will see a screen like this:





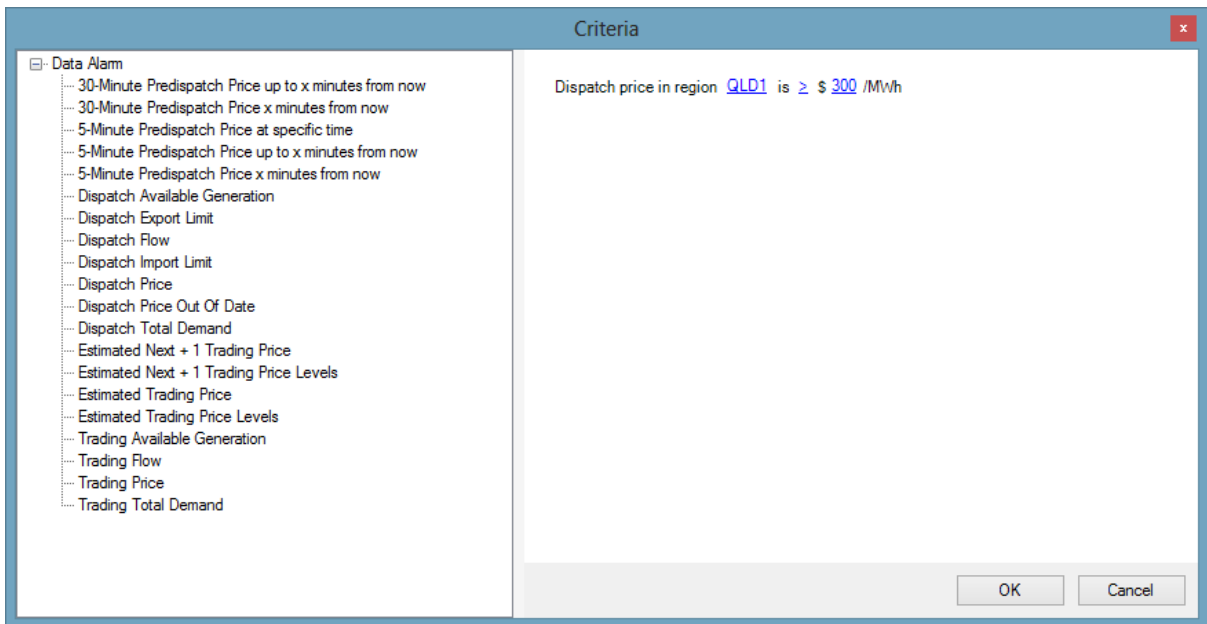
Click on "Dispatch Price", and it will be added into the panel on the left:



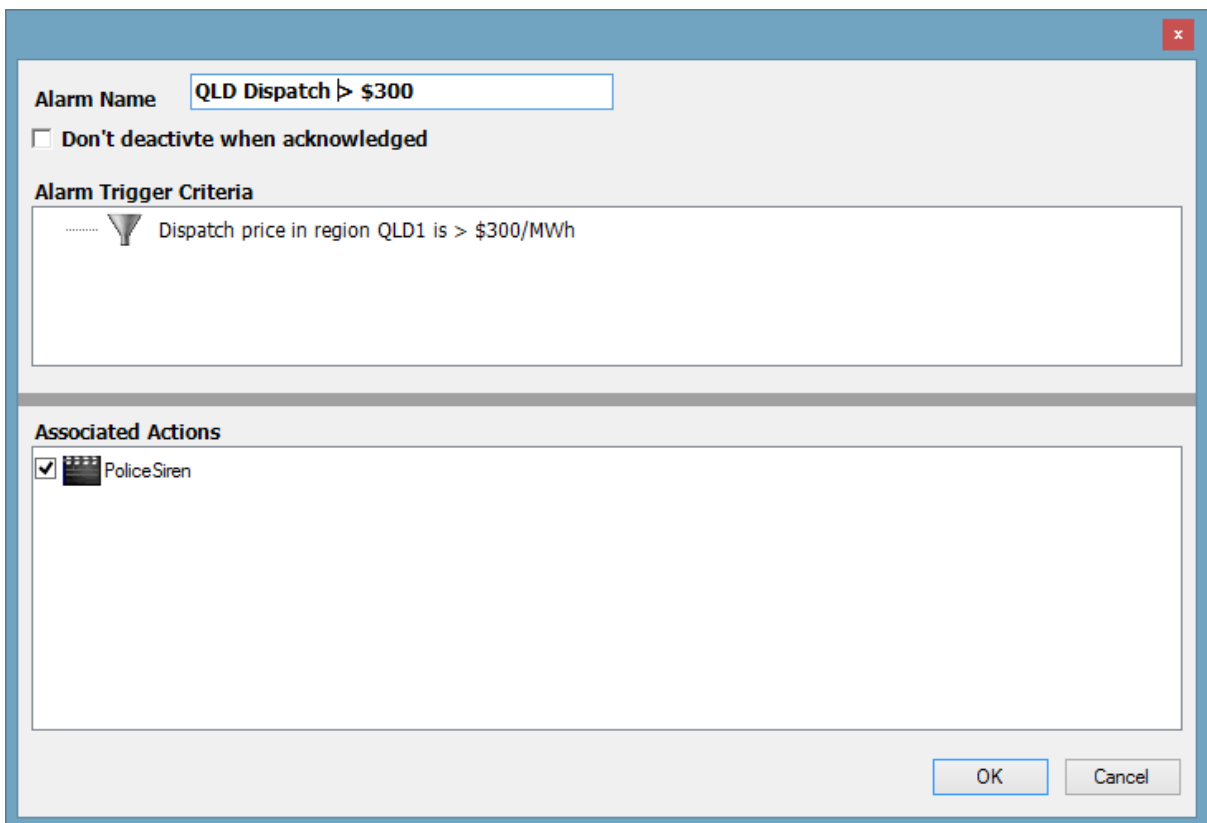
Select the values for the Region, Operator, and Threshold Value by clicking the "<Click to Set>" links.

In the example below we have selected dispatch price in Queensland is greater than \$300/MWh.





Click OK and you will return to the previous screen:

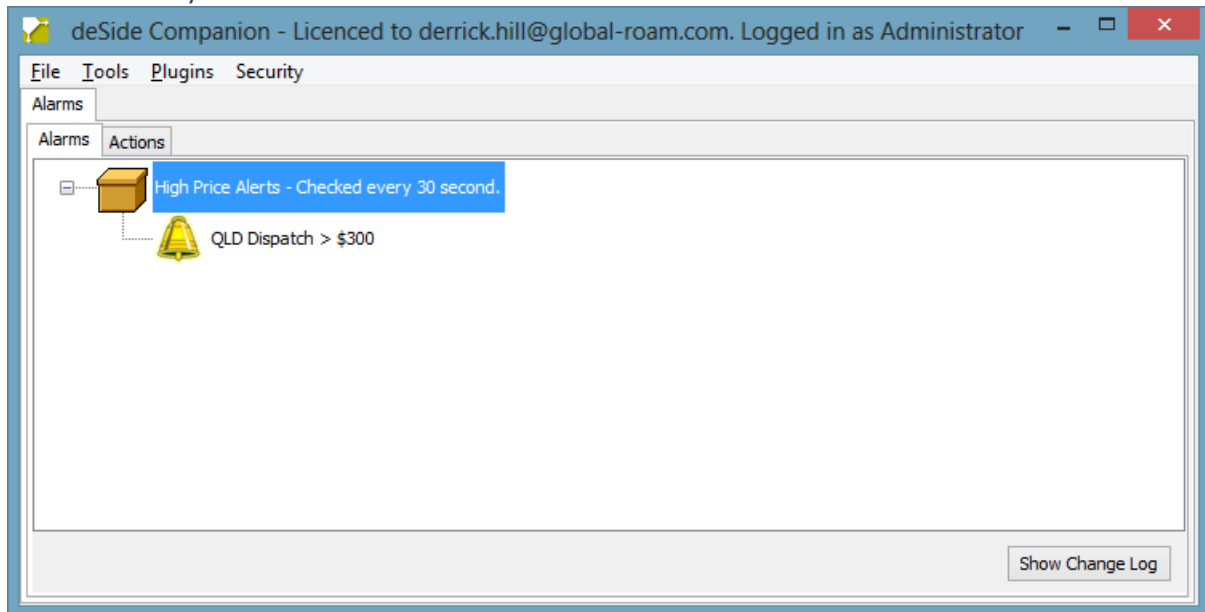


GLOBAL-ROAM

*Helping you lower costs, increase revenue, and reduce stress
by making the energy market understandable*

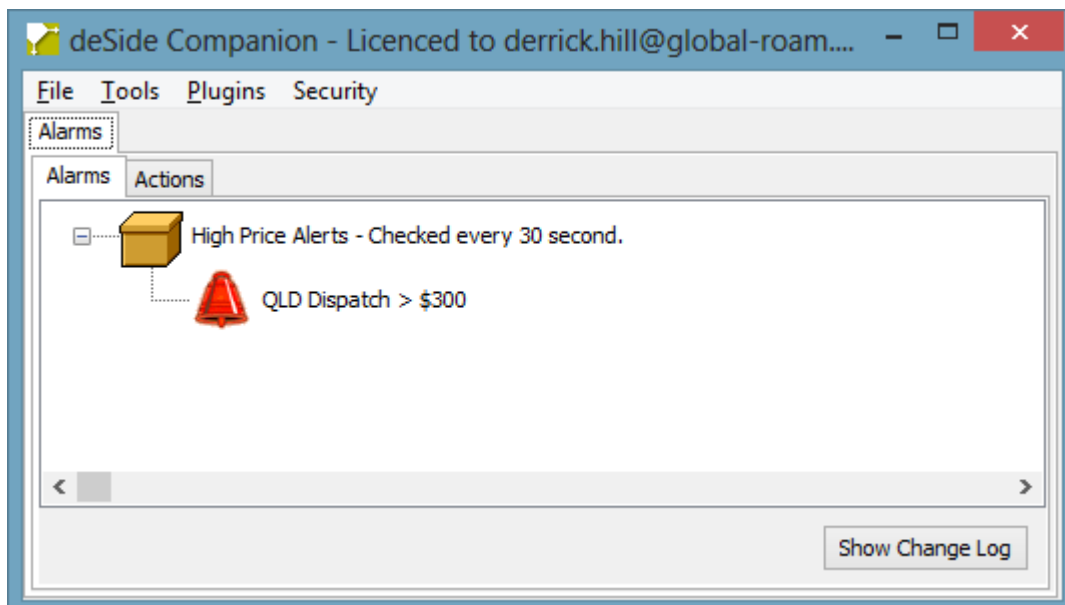
In the screen above we have selected “PoliceSiren” in the lower panel so that the Companion will use that action whenever the alarm trigger becomes true. We have also named the alarm in the box at the top of the screen.

Click “OK” and you will see this screen:

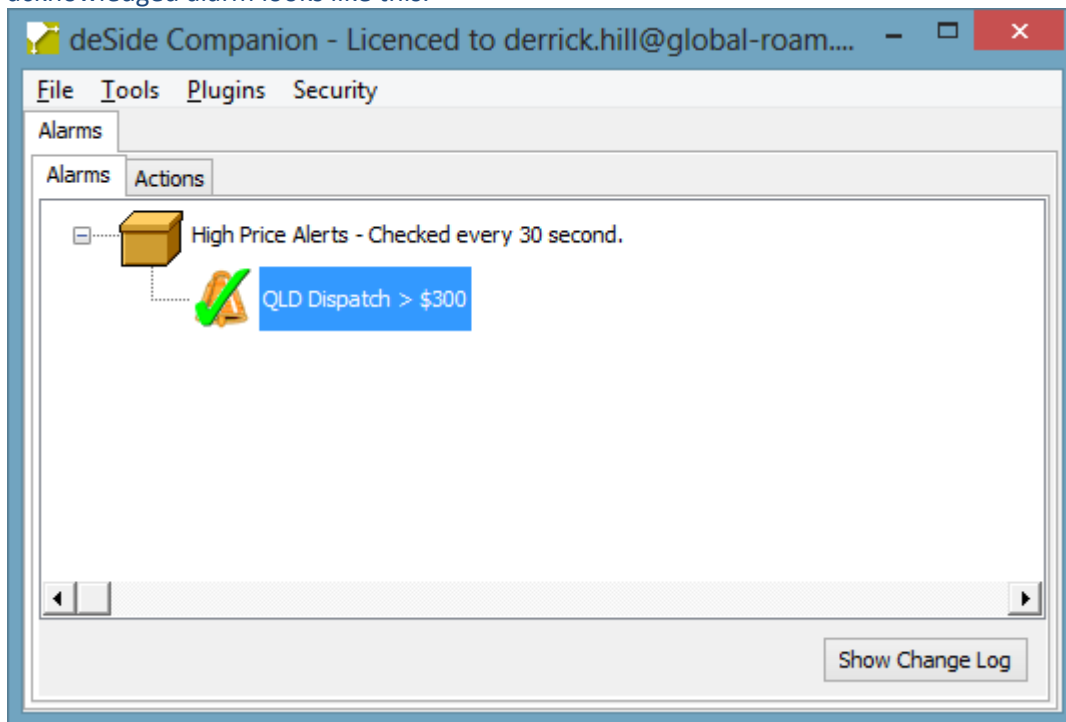


Alarm Behaviour and Acknowledging Alarms

If an alarm triggers, the icon for that alarm will flash in the main panel and the Companion will execute the action(s) associated with the alarm (e.g. a sound will be played):



To acknowledge an alarm you right-click on the alarm icon and select “Acknowledge Alarm”; an acknowledged alarm looks like this:



Once an alarm has been acknowledged it will appear as acknowledged until the condition that triggered the alarm goes away. So, in this case the alarm will be in the acknowledged state until the dispatch price in Queensland falls below \$300.

Continuous Sound Alarms

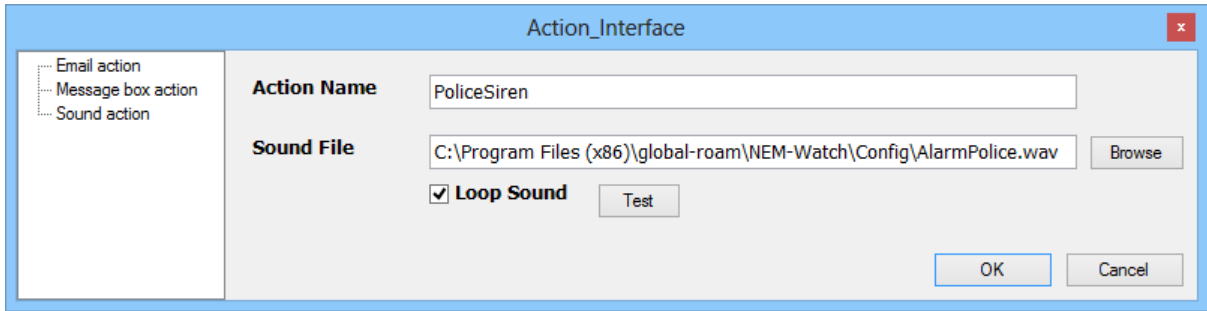
The Companion allows you to set up different “stopping behaviours” for sound alarms. Sound alarms can be configured to either

- Play the sound once only when the alarm triggers
- Continue to play the sound after the alarm triggers until the alarm is acknowledged
- Continue to play the sound as long as the condition that triggered the alarm remains true (regardless of whether the alarm has been acknowledged or not).

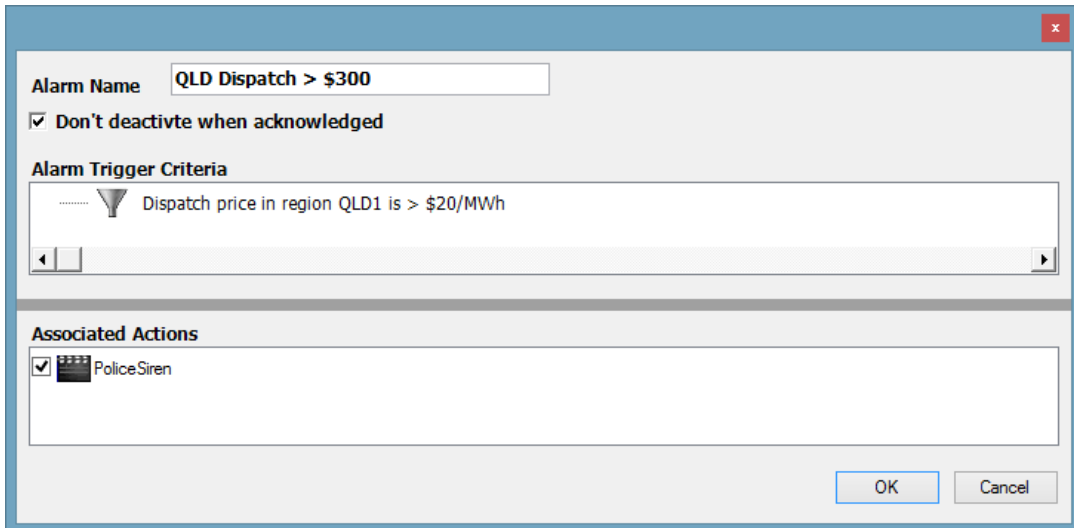
You use two checkboxes within the Companion to control this behaviour.

The first checkbox is on the action and it controls whether the sound is repeated or played once only. To find this checkbox you go to the Actions tab, right-click on the “PoliceSiren” action and select “Edit Action”; the “Loop Sound” checkbox is next to the “Test” button. If this checkbox is unselected, then the sound will be played once only; if it is selected then the sound will be repeated.





The second checkbox is on the alarm and it controls whether the sound is stopped when the alarm is acknowledged. To find this checkbox you go to the Alarms tab, right-click the “QLD Dispatch > \$300” alarm and select Edit Alarm; the “Don’t deactivate when acknowledged” checkbox is beneath the “Alarm Name”. If this checkbox is unselected, then the sound will be stopped when the alarm is acknowledged; if it is selected then the sound will be repeated after the acknowledgment and until the alarm trigger becomes false.

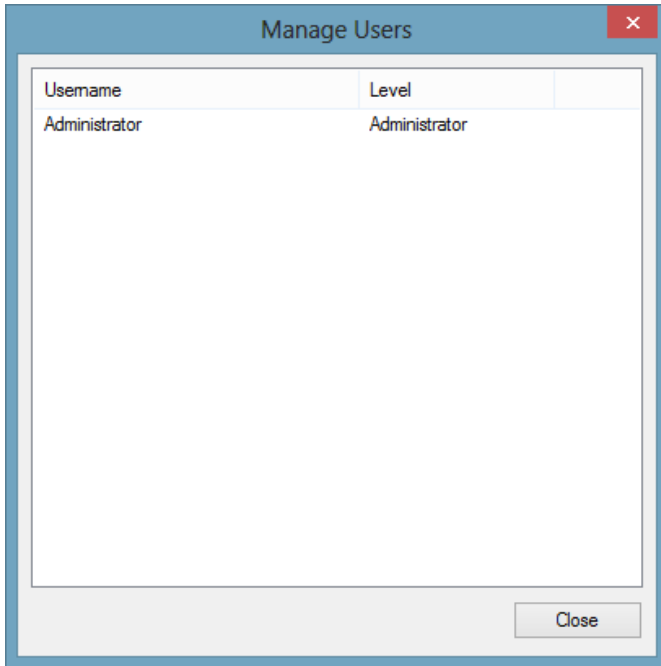


Managing Users

The Companion allows you to create different user accounts and to assign different classes of privileges to each user. This is so you can manage who is able to change alerting behaviour.

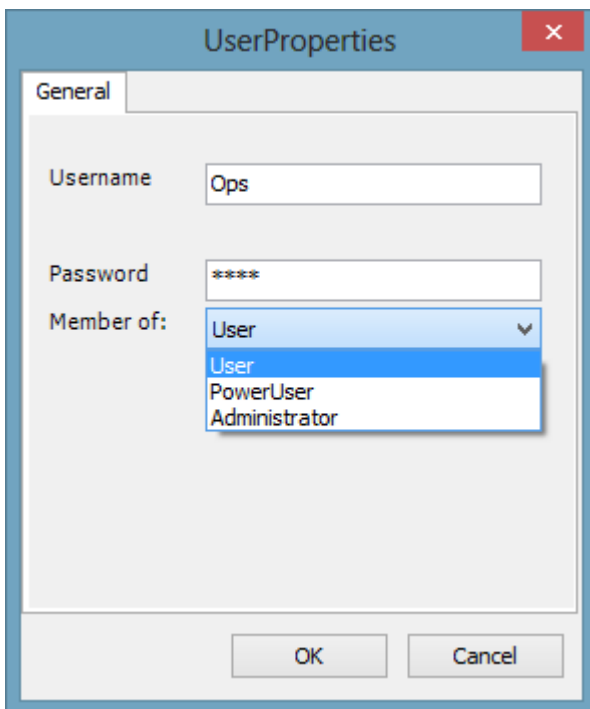
To access the user management screen select “Security | Manage Users” from the main menu. You will see this screen:





If you right-click on a selected user in the list, you can edit or delete that user.

If you right-click on the background of the panel you can Add a User. The screen below has been used to create a new user called Ops with User privileges.



Support

If you require assistance with the deSide Companion, please contact Global-Roam as follows:

e-mail support@global-roam.com

phone +61 7 3368 4064

